



The Province of Parma

a real pleasure

The sights of Parma.
The town and its surroundings.

compact guide



**PROVINCIA
DI PARMA**

Parma



Info Book Shop

Strada Garibaldi, 18 Parma tel. +39 0521 931800 fax +39 0521 931881 info@parmapoint.it



Informazione e accoglienza turistica

IAT Busseto

Open all year round
+39 0524 9248 - fax +39 0524 931740
info@bussetolive.com



IAT Colorno

Open all year round
+39 0521 313790 - fax +39 0521 521370
ufficioturistico@comune.colorno.pr.it

IAT-R Fidenza Village

Open all year round
+39 0524 335556 - fax +39 0524 537135
iat.fidenzavillage@terrediverdi.it
Sportello "Casa Cremonini"
Open all year round
+39 0524 83377 - fax +39 0524 519159
iat.fidenza@terrediverdi.it

IAT Fontanellato

Open all year round
+39 0521 823220 - fax +39 0521 824042
ufficio.turistico@comune.fontanellato.pr.it

IAT Fornovo

Open from March to December
+39 0525 2599 - fax +39 0525 2599
turist48@prolocofornovo.191.it

IAT Parma

Open all year round
+39 0521 218889 - fax +39 0521 218887
turismo@comune.parma.it

IAT Sala Baganza

Open all year round
+39 0521 331343 / 331342
fax +39 0521 336429
iatsala@comune.sala-baganza.pr.it

IAT Salsomaggiore Terme

Open all year round
+39 0524 580211 - fax +39 0524 580219
info@portalesalsomaggiore.it

IAT Tabiano Terme

Open 15/03 to 15/12
+39 0524 565482 - fax +39 0524 567533
intabiano@portalesalsomaggiore.it



IAT Torrechiara

Open all year round
+39 0521 355009 - fax +39 0521 355821
iat@comune.langhirano.pr.it



All IAT offer free Last Minute booking services for local hotels if you arrive at the office after 15.00 on the day you wish to book accommodation for.



Tourist Information Office Bardi

Open from March to October: Sat., Sun., and Public holidays
+39 0525 733075 - fax +39 0525 733075
ufficioturistico@bardiservizi.com

Tourist Information Office Bedonia

Open from June to September
+39 0525 824765 - fax +39 0525 824765
ufficioturistico@comune.bedonia.pr.it

Tourist Information Office Berceto

Piazza G. Bosco 2,
Tel. fax + 39 052564224
infoberceto@gmail.com

Tourist Information Office Bore

Open July, August
+39 0525 79137 - fax +39 0525 79207
bore@comune.bore.pr.it

Tourist Information Office Borgotaro

Open all year round
+39 0525 96796 - fax +39 0525 96796
uit@comune.borgo-val-di-taro.pr.it

Tourist Information Office Monticelli Terme

Open all year round
+39 0521 657519 - fax +39 0521 686633
turismo@comune.monteciarugolo.pr.it



Tourist Information Office Monte Fusso - Neviano Arduini

Open from April to September and Thursday
+39 0521 840151 - fax +39 0521 840148
ufficio@coopfuso.com

Tourist Information Office Noceto

Open all year round
+39 0521 622227 - fax +39 0521 622155
turismo@comune.noceto.pr.it

Tourist Information Office San Secondo

Open all year round
+39 0521 873214 - fax +39 0521 871500
uit@comune.san-secondo-parmense.pr.it

Tourist Information Office Tornolo

Open from April to November
+39 0525 89272 - fax +39 0525 89272
prolocotarsogno@tiscali.it



Free electric scooters available for tourists with special needs.

The Province of Parma. A real pleasure.

The province of Parma boasts many good qualities: a region with a strong identity and long-standing European traditions that shape the numerous opportunities offered to visitors. It is a pleasure to get to know and discover every aspect of this region: experience a subtle range of emotions and fall in love after just one glimpse.

Numbers before the paragraphs refer to the map of the city and its province, according to the symbol and colour, found on pages 18 and 20.



● Art and culture

Parma and its province, an area with all the signs of ages past, treasures by renowned masters of painting and music, the mystery and legends of ladies and knights. Numerous masterpieces, precious sacred artefacts, architecture from the war period and stately homes dotting the region from plain to Apennines.



● Taste

A fertile land with a wealth of world-famous food and wines, the province of Parma boasts an extensive food and gastronomic tradition. It is easy to visit the places where those specialities are produced, to choose a good restaurant where you can taste Culatello from Zibello, or the black truffles from Fragno, Parma ham, Parmesan cheese, Felino salame, and the porcini mushrooms from Borgotaro.



● Sport and nature

For those who love nature, cycling, trekking, golf, modern sports, or who simply wish to enjoy a relaxing holiday, Parma and its territory offer many sports events, traditional fêtes, as well as different types of accommodation to suit all tastes (hotels, country homes, B&Bs, camping sites and relais accommodation), set in a natural, charming environment.



● Wellness and leisure time

The province of Parma is a spa region *par excellence* – that was already well established in Roman times. The area is brimming with centres for thermal treatments and wellness facilities, nestling in lush green hills, an oasis of peace full of cultural and social events held on historical-artistic routes with a vast choice of interesting outings.



1 CATHEDRAL

Dedicated to Our Lady of the Assumption, it is considered a supreme example of the Romanesque style in the Po river valley. Inside, there are numerous masterpieces, including the famous "Deposition" by Benedetto Antelami, and the dome with Correggio's fresco dedicated to the Madonna. P.za Duomo, Parma tel. +39 0521 208699

2 DIOCESAN MUSEUM

Situated near the Bishop's Palace, it houses lapidary art from the Cathedral, mosaics from the ancient Paleochristian basilica and the original statues that once stood outside the Baptistry. Visitors can also admire impressive local archaeological finds. P.za Duomo, Parma tel. +39 0521 208699

3 BAPTISTERY

Begun by Antelami in 1196 with the help of his workmen, the Baptistry was completed in 1307, and represents a perfect blend

of Romanesque and Gothic styles. It features a very rich array of sculptures and paintings, both inside and outside. P.za Duomo, Parma tel. +39 0521 208699

4 "PILOTTA" PALACE

The building was started towards the end of the 16th century and was meant to house the ducal court of the Farnese family. However, from the 17th century it was used for cultural events, and is still used for that purpose as today it houses the National Gallery and Archaeological Museum, the Palatine Library and other important cultural and artistic institutions.

● FARNESE THEATRE

This grandiose and striking wooden masterpiece created by Giovan Battista Aleotti, known as l'Argenta, for Ranuccio I Farnese, is the first example of a theatre with technology for moving stage sets.

P.le della Pace, Parmatel. +39 0521 233009

● NATIONAL GALLERY

The picture gallery was created in the mid-eighteenth century by the enlightened Duke Filippo di Borbone; it has since been extended and enriched. The Rocchetta section is particularly important as it houses significant work by Correggio and Parmigianino. P.le della Pace, Parmatel. +39 0521 233309

● ARCHAEOLOGICAL MUSEUM

The museum was opened to house archaeological finds from the digs at Velleia, and was subsequently enlarged to include Egyptian collections, important finds from the Terramare civilisation and the first settlers in Parma before the Roman colonization. P.le della Pace, Parmatel. +39 0521 233718

● PALATINA LIBRARY - BODONI MUSEUM

Founded in 1761 by Philip of Bourbon

and opened to the public in 1769, the historical Palatina library is divided into three halls: the Marie Louise Hall, the Dante Hall, frescoed by Scaramuzza with scenes from Dante's Divine Comedy and the Petitot Gallery, preserving antique bookcases. From here there is the access to the Bodoni museum, dedicated to the typographer Giambattista Bodoni who directed the Parma Royal Printing Works from 1768, in the museum are preserved original tools and items: punches, presses, perforating dies, the original matrixes and boxes of alphabet.

P.le della Pace, Parmatel. +39 0521 220411

5 CHAMBER OF ST. PAUL

The ancient monastery of S. Paolo houses the magnificent Chamber painted by Correggio in 1519. Other rooms were painted by Araldi a few years earlier, and make this one of the





shrines of classical culture in Parma.
Via Melloni 3, Parmatel. +39 0521 533221

6 STUARD GALLERY

Housed in a wing of the former monastery of San Paolo, the gallery displays paintings, drawing and engravings owned by the municipality and dating from the 14th to the 20th centuries, many of which are private donations, the most noteworthy being the one from the nobleman Giuseppe Stuard. Borgo Parmigianino 2, Parma tel. +39 0521 508184

7 PUPPET'S MUSEUM

An important museum housing the vast collection of puppets, marionettes, and set designs and posters produced by Giordano Ferrari over a period of sixty years; they are a testimony to the wealth of artistic talent behind this type of popular show. Via Melloni 3, Parma tel. +39 0521 031631 / 218873

8 GLAUCO LOMBARDI MUSEUM

Set in the halls of the Palazzo di Riserva, it houses works, furnishings, clothes and historical relics and mementoes, belonging to the Duchess Maria Luigia. It also displays memorabilia of Napoleon Bonaparte and a collection of paintings and engravings by French and local artists. Via Garibaldi 15, Parmatel. +39 0521 233727

9 AMEDEO BOCCHI AND RENATO VERNIZZI MUSEUM

Dedicated to one of Parma's most appreciated artists, the museum was created by the Banca Monte Foundation with donations from the painter's heirs. It displays paintings, frescoes, drawings, sketches and sculptures which give a comprehensive view of the artist's work. The museum is dedicated to the painter Renato Vernizzi and it's located in the same palace of the Amedeo Bocchi museum. The museum presents an

important selection of works (about sixty) and shows an historical reconstruction of the atelier of the artist.

Palazzo Sanvitale Via Cairoli, Parma tel. +39 0521 228289

10 CHURCH AND CLOISTERS OF SAN GIOVANNI EVANGELISTA

The monastery dates back to the 10th century, but the church was rebuilt in the 15th and 16th cent. The interior houses Correggio's magnificent dome and various early frescoes by Parmigianino. The wonderful library can also be visited, with its 20,000 antique books. Piazzale San Giovanni 1, Parma tel. +39 0521 235311

11 OLD PHARMACY

This was originally a part of the San Giovanni monastery and its three rooms – furnished with 17th century furniture – now display precision

instruments, alembics, mortars and manuscripts documenting the history of the apothecary's shop.

B.go Pipa 1, Parma tel. +39 0521 508532

12 CHURCH OF SANTA MARIA DELLA STECCATA

The church was built in response to popular request to house an image of the Madonna painted on a wooden fence ("Steccata") which was considered miraculous. In the presbytery, the archway displays the cycle of frescoes of the Wise and Foolish Virgins, by Parmigianino.

P.za Steccata 9, Parmatel. +39 0521 234937

13 CONSTANTINIAN MUSEUM

The museum houses the rich collection belonging to the Constantinian Order of St George and displays objects of religious and liturgical worship, paintings, historical mementoes



10



12



14

and heraldic relics which document its long history under the Dukes of Parma and to the present day.
via Dante 8/A, Parma
tel. +39 0521 282854 / 234937

14 REGIO THEATRE

Built between 1821 and 1829, in neoclassical style by the Duchess Maria Luigia, it has become the temple of Verdi's operas thanks to its renowned opera season and to the critical expertise of the "loggionisti", opera-lovers who are seated in the Gallery.
Via Garibaldi 16, Parma
tel. +39 0521 203993 / 203911

15 NICOLÒ PAGANINI CONCERT HALL
Set in the beautiful parkland of the Eridania Park, The Auditorium lies in the area of a former sugar factory which was renovated by the world famous architect Renzo Piano. The concert season of the Regio Theatre takes place here.

Via Toscana 5/A, Parma
tel. +39 0521 203993 / 273037

16 TOSCANINI'S BIRTH PLACE

Furnishings, mementoes and original documents belonging to the famous conductor are on display together with a modern multimedia installation narrating the artistic path that led the Maestro to world fame.
Borgo Rodolfo Tanzi 13, Parma
tel. +39 0521 285499

17 HOUSE OF MUSIC

The Regio Theatre's archives and those of various other music institutions are housed in the historical Cusani Palace, as well as an interesting multimedia museum and music library, with special sections dedicated to Verdi and Toscanini.
Piazzale San Francesco 1, Parma
tel. +39 0521 031170

18 HOUSE OF SOUND

Hosted in the ex Church of Santa Elisabetta, in front of the House of Music, the museum displays a rich collection of communication devices and sound players, from phonographs to mp3 gathered by don Giovanni Patanè, who collected more than 400 items including a wide range of crystal sets, vintage, professional, military and standard radios.
Piazzale Salvo D'Acquisto, Parma
Tel. +39 0521 031103 / 031170

19 DUCAL PARK AND PALACE

The grounds are in the original "French" style the Borbone family had planned, with elaborately arranged greenery embellished with statues and other decorative elements. The Farnese family were the first to turn the ancient castle into a palatial residence.
Palazzo Ducale tel. +39 0521 508184 / 282868

20 PALAZZETTO EUCHERIO SANVITALE - DUCAL PARK

A remarkable example of Renaissance architecture. It is an H shaped building, with four corner towers connected by loggias and windows decorated with sandstone candlesticks. In the interior, recent restoration works have revealed fragments of 16th century frescoes by Parma school artists, depicting landscapes and still lifes.
tel. +39 0521 230267 / 218889

21 CITTADELLA PARK

Built by the Farnese family at the end of the 16th century for military purposes, it was to be the fortress to protect the city. Today it is a popular public park where sports-minded people like to congregate.
Via Passo Buole, Parma

22 CARLO MATTIOLI MUSEUM

In the 17th century Smeraldi palace
The atelier of a great Maestro of the 20th



19

century, still as it was back in time, with his collection of works on display exactly where they were painted. Open on reservation. Palazzo Smeraldi Borgo Retto 2, Parma Tel. +39 0521 230366

23 BOSSI BOCCHI PALACE CARIPARMA FOUNDATION

The museum houses several paintings giving evidence of the artistic activity in the Parma area between 17th and 20th century. Precious Italian ceramics and porcelains of the 15th and 16th centuries, a collection of bank notes, some precious Parmesan pieces of furniture, iconographic collections, printings and drawings of the town. Strada Ponte Caprazucca 4, Parma tel. +39 0521 532111

24 CHINESE ART AND ETHNOGRAPHIC MUSEUM

The collection was started at the end of

19th century, by Guido Maria Conforti Bishop of Parma. Displayed on three levels: the didactic hall, the office, the library and the archive on the third level, in the mezzanine the reception, the space for temporary exhibitions and the space Kayapò; underground the space China.

Viale San Martino 8, Parma
tel. +39 0521 257337

UNIVERSITY OF PARMA MUSEUMS

<http://www.musei.unipr.it/en>

25 COMMUNICATION STUDY CENTRE AND ARCHIVE – CSAC

CSAC is a museum., an archive and a research centre of contemporary art and visual communication. Housed in the in the Cistercian Abbey of Valserena, a complex of 12th century known as “Certosa di Paradigna”, is open to the public from May 2015. CSAC holds a collection of approximately 12 million artworks, subdivided into the following sections: Art, Photography, Media, Projects and Visual Arts. Strada Viazza di Paradigna, 1 tel. +39 0521 033652

26 NATURAL HISTORY MUSEUM

Founded in 1766 by J.B. Fourcalt, court ornithologist, it was directed by such famous zoologists as Strobel, Andres and Schreiber. Subdivided into the historical section and the modern one, located in the Botanic Garden, the Museum houses several zoological and ethnographic collections.

Via Università, 12 (historical section)
Via Farini, 90 (modern section)
tel. +39 0521 033430

27 BOTANIC GARDEN

It was founded in 1770 by Gianbattista Guatteri, professor of Botany at Parma, and its area (11,000 square metres) has not changed since the Garden's foundation. In and between the greenhouses projected in 1793 by the famous architect Petitot, the Garden hosts 2,000 botanical species: particularly interesting are the new collections of insect-eating, succulent plants and violets, among which the Parma violet stands out.

Via Farini, 90 tel. +39 0521 903433

28 MUSEUM OF PHYSICS AND EARTH SCIENCES

Founded in 2013, the Museum consists of the following four sections: Palaeontology, Mineralogy, Macedonio Melloni's Scientific Instruments and “Microcosm with a view”, a permanent scientific exhibition devoted to the world of elementary particles.

Parco Area delle Scienze, 7/A e 157/A
tel. +39 0521 905259 / 905340 / 905367 905326

29 MUSEUM OF THE DEPARTMENT OF MATHEMATICS AND INFORMATION TECHNOLOGY

The Museum was founded in 2013 to develop a programme of cultural work about mathematics and information science and technology. At present

two interactive permanent exhibitions are available: “The history of the personal computer” and “Pythagoras and his theorem”.

Parco Area delle Scienze, 53/A
tel. +39 0521 906929

30 MUSEUM OF BIOMEDICAL, BIOTECHNOLOGICAL AND TRANSLATIONAL SCIENCES - S.B.I.B.T

Most likely, anatomical artefacts appeared at the University of Parma when the Farnese Dukes governed the area. At the present, the Museum hosts many important anatomical collections, among which the Tenchini's one stands out. It consists of 37 wax mask (so called moulages) reproducing morphological features of the face of the criminals whose bodies the anatomist Tenchini, a follower of Cesare Lombroso's doctrine of forensic anthropometry, used for his anatomical dissections.

Via Gramsci, 14 tel. +39 0521 033143

31 LEMOIGNE VETERINARY ANATOMICAL MUSEUM

The old room of veterinary dissections and the School of Veterinary Science were both founded in 1845. The veterinary anatomical Museum is now located in the Department of Medical-Veterinary Sciences and it houses 685 anatomical preparations, both normal and teratological, dating back to the 19th and 20th centuries.

Via del Taglio, 10 tel. +39 0521 902640



A tourist circuit of beautiful and well preserved castles in the provinces of Parma and Piacenza allows visitors to admire some of the most stunning castles in Italy. Ass. Castelli del Ducato di Parma e Piacenza tel. +39 0521 823221 / 823220

1 THE COLORNO PALACE

Initially it served as a border castle, later to become a sumptuous ducal residence embellished by the huge, marvellous French-style garden. Piazza Garibaldi 26, Colorno tel. +39 0521 312545

2 ROCCASANVITALE IN FONTANELLATO

Surrounded by a moat filled with water, this castle houses the hall "Diana e Atteone" frescoed by Parmigianino Piazza Matteotti 1, Fontanellato tel. +39 0521 829055

3 ROCCA DEI ROSSI IN SAN SECONDO

The sumptuous residence of the

Rossi family, celebrated in the superb, imposing Sala delle Gesta. Piazza Mazzini 12, San Secondo Parmense tel. +39 0521 873214

4 ROCCABIANCA CASTLE

Residence of Bianca, Pier Maria Rossi's beloved, whose memory is preserved in the decoration under the portico. Piazza Minozzi, Roccabianca tel. +39 0521 374065

5 ROCCA MELI LUPI IN SORAGNA

Founded at the end of the 14th century as a fortress, it became a precious princely home in the 18th century. Piazza Meli Lupi 5, Soragna tel. +39 0524 598072 / 597978

6 FELINO CASTLE

Strategically located between the valleys of the Parma and Baganza, reached its maximum power in the fifteenth century.

Via Castello 1, Felino tel. +39 0521 336020 / 272717

7 SALA BAGANZA CASTLE

The castle belonged to the Sanvitale family and later to the Dukes of Parma; today it appears as a single unit terminating in two towers. Piazza Gramsci, Sala Baganza tel. +39 0521 331342 / 331343

8 TORRECHIARA CASTLE

For centuries, this castle has been the backdrop to the love story between Pier Maria and Bianca, as it is illustrated in the "Golden Chamber". Via al Castello 1, Torrechiara di Langhirano tel. +39 0521 355255

9 MONTECHIARUGOLO CASTLE

Built by the Condottiere Guido Torelli; it later became a meeting point for important artists and guests, thanks to the fame of Pomponio Torelli.

Via Roma, Montechiarugolo tel. +39 0521 686643 / 681977

10 BARDI FORTRESS

It has dominated the Ceno Valley since the 9th century, first as a military garrison and then as a residence for the Landi princely family. Via al castello, Bardi tel. +39 0525 733066

11 COMPIANO CASTLE

The towers of the castle dominate the Taro valley. It houses the "Gamberotta" collection of paintings and objets d'art. Via M.R. Sidoli 15, Compiano tel. +39 0525 825541

12 SCIPIONE CASTLE DEI MARCHESI PALLAVICINO

The castle, one of the most ancient of the region, was built in the XI century by Marquises Pallavicino, one of the rare lineages in Europe to have more than



thousand years of documented history. Borgo di Scipione Castello 61, Salsomaggiore Terme tel. +39 0524 572381

13 CASTELLO PALLAVICINO DI VARANO DE' MELEGARI

Pallavicino Castle of Varano de' Melegari. The castle dominates the Ceno Valley. You can visit the courtyard, staircase and grand staircase, walkways, prison Bentivoglio, main floor, ancient kitchens. Via Rocca 1, Varano de' Melegari tel. +39 0525 400021

14 CASTLE OF NOCETO

Surrounded by the garden, the castle is named Castle of Music because it houses Museum of Old Records & collection of Parma Liuteria. Piazza Garibaldi 1, Noceto tel. +39 0521 823978

15 ANTICA CORTE PALLAVICINA

The Castle on the Po with the oldest ineries of Italy where cured meats, culatelli, cheeses and wines are sharpened. Strada del Palazzo Due Torri 3, Polesine Parmense tel. +39 0524 936539

16 ROCCA DEI TERZI DI SISSA-TRE CASALI

The fortified complex of the Rocca dei Terzi di Sissa (fourteenth century) has preserved tower overlooking two shares lower inserted in the eighteenth century by changing the existing medieval. Info: Ass. Castelli del Ducato Tel. +39 0521 823221 / 823220

Via Francigena and Romanesque Pathways



Romanesque is one of the most widespread styles in medieval Europe; symbols, forms and figures are the same from North to South. They were devised to help travellers through the ages and were carved on the façades of cathedrals as well as on humble country churches.

Parma and its surroundings provide a grandiose example of all these features thanks above all to the Via Francigena: the main pilgrim path to Rome, taken by emperors, popes, soldiers and merchants. Today the main route, from Fidenza to Fornovo Taro and up to Berceto, to the Cisa Pass and beyond, can be travelled with the same pace as in medieval times, one step at a time, experiencing the same emotions as were felt by pilgrims of all times as they trod these well-worn paths through the hills and forests of the Apennine mountain range.

For information about Via Francigena, please contact Associazione Europea delle Vie Francigene e l'Associazione Cammini d'Europa tel. +39 0523 492792 www.viefrancigene.org www.camminideuropa.eu



17 SAN DONNINO CATHEDRAL Fidenza

The history of the martyr-saint is narrated on the rich sculptural decorations by Benedetto Antelami on the façade of the cathedral together with other beautiful scenes. The cathedral and bishop's palace can be visited as well as the Museum featuring San Donnino's Treasures Info: Sacrestia della cattedrale tel. +39 0524 522354

18 SANTA MARIA ABBEY Castione Marchesi - Fidenza

The church and part of the cloisters are what remain of the ancient abbey, but they have been repeatedly renovated through the centuries. The interior houses the only example of a Romanesque mosaic in the province of Parma. Info: Chiesa di Castione Marchesi tel. +39 0524 67194

19 CHURCH OF ST. THOMAS BECKET Cabriolo - Fidenza

Founded probably in the 12th century, it soon became the church of the Templars; it was built on a low-rise hill to provide support to pilgrims travelling along the Via Francigena. Info: Chiesa di Cabriolo tel. +39 0524 81912

20 CHURCH OF SAN NICOMEDE San Nicomede - Salsomaggiore Terme

Probably one of the oldest churches in the province of Parma, it still houses a pre-Romanesque crypt dating back to the 11th cent. and was made with Roman and Longobard materials. Info: Chiesa di Cabriolo tel. +39 0524 81912



21 PARISH CHURCH OF SAN GIOVANNI BATTISTA

Contignaco - Salsomaggiore Terme
Situating in a panoramic position, it houses various parts of fifteenth-century frescoes in the area of the bell tower.

On the façade, a stone sculpture of the "Madonna" can be admired.
Info: Chiesa di Contignaco
tel. +39 0524 578247

22 SANCTUARY OF SANTA MARIA ASSUNTA

Careno - Pellegrino Parmense

The church dates back to the 13th century, and the façade and apse date back to the Romanesque period; the church underwent renovations in the 15th century, to which period the recently restored frescoes belong.
Info: Chiesa di Careno
tel. +39 0525 59344



23 CHURCH OF SANTI SIMONE E GIUDA Sanguinario - Noceto

The pre-Romanesque crypt dates back to the XI century; the upper apse boasts parts of frescoes painted in the 13th -14th centuries.

Info: Chiesa di Noceto tel. +39 0521627246

24 CHURCH OF SAN LORENZO AND BAPTISTERY

Serravalle - Varano de' Melegari

The church dates back to the year one thousand but was completely renovated in the 15th century; the Baptistry, however, is the oldest Romanesque monument in the province of Parma.
Info: Chiesa di Varano de' Melegari
tel. +39 0525 53221

25 CHURCH OF SAN CRISTOFORO Tiedoli - Borgotaro

Recent archaeological digs have uncovered the foundations of the bell

tower and the circular apse, part of the religious structure dating back to the 10th century.

Info: lat di Borgo Val di Taro
tel. +39 0525 96796

26 ABBEY OF SAN BERNARDO Fontevivo

Founded by the Cistercian monks in 1142, the abbey developed as the land reclaiming works proceeded; a "Madonna" by Antelami can be admired inside the church.

Info: Chiesa di Fontevivo
tel. +39 0521 610160

27 PARISH CHURCH OF SAN GENESIO San Secondo

This small church stands isolated in the fields and is a testimony to how churches in the countryside were the place where people would meet and come together.



Info: IUT San Secondo
tel. +39 0521 873214

28 PARISH CHURCH OF SAN GIOVANNI BATTISTA Gainago - Colorno

Dating back to the 12th century, the buildings include the church, the rectory and the bell tower. It was probably embellished with frescoes at the end of the 13th century.

Info: Parrocchia di Gainago
tel. +39 0521 819189

29 CHURCH OF SAN GEMINIANO Vicoforte - Parma

Found along one of the paths of the Via Francigena, it still contains Romanesque capitals and a beautiful christening font featuring religious scenes and figures.

Info: Chiesa di Vicoforte
tel. +39 0521 672759

30 PARISH CHURCH OF SAN PANCRAZIO San Pancrazio - Parma

Situated on the Via Emilia, the interior boasts Roman capitals that were reused and some parts of pre-Romanesque frescoes: Abel, San Pancrazio and a Madonna with Child.

Info: Chiesa di San Pancrazio
tel. +39 0521 671200

31 PARISH CHURCH OF SANTI IPPOLITO E CASSIANO Gaione - Parma

One of the oldest parish churches in the province of Parma. Built on Roman ruins, the perfect architecture testifies that this church was once one of the most important in the late middle ages. Info: Chiesa di Gaione
tel. +39 0521 648161

32 PARISH CHURCH OF SAN PROSPERO Collecchio

Built on a low-rising hill, it boasts a series of Romanesque elements such as capitals, a christening font and a marble slab depicting the "Battesimo" (Baptism), of Byzantine inspiration. Info: Chiesa di Collecchio
tel. +39 0521 805333

33 CHURCH OF SAN BIAGIO Talignano - Sala Baganza

Probably founded by French Cistercian monks as testified by the lunette depicting the "Psicostasi" ("Psychostasis"), where the souls of the dead are weighed between St Michael and the devil. Info: IAT Sala Baganza
tel. +39 0521 331342

34 PARISH CHURCH OF SANTA MARIA ASSUNTA Fornovo Taro

The parish church was built on a pagan temple and it boasts a wide range of sculptures; it has been an essential point of reference along the Via Francigena in the province of Parma since ancient times.

Info: Chiesa di Fornovo Taro
tel. +39 0525 2218

35 CHURCH OF SANT'ILARIO Sant'Ilario Baganza - Felino

Dedicated to the patron saint of Parma, the church has strong bonds with the city, since its Romanesque capitals were originally in the Cathedral. Info: Chiesa di Sant'Ilario Baganza
tel. +39 0521 830101

36 PARISH CHURCH OF SANTA MARIA Bardone - Terenzo

Located in a pleasant panoramic position along the Via Francigena, this church was founded by the Longobards and is now a museum housing numerous Romanesque sculptures. Info: Comune di Terenzo
tel. +39 0525 527603.

37 CHURCH OF SAN PIETRO E PAOLO ABBEY OF SAN BASILIDE

Badia Cavana - Lesignano de' Bagni
Founded at the end of the 11th century, it originally included both the church and the abbey. Today, only the church can be visited and houses fine examples of Romanesque decorations.

Info: Chiesa di Badia Cavana
tel. +39 0521 350103

38 SAN MODERANNO CATHEDRAL Berceto

One of the most important Romanesque monuments along the Via Francigena in the province of Parma, the cathedral boasts a wide range of sculptures dating back to the Longobards and up to the mid-fifteenth century.

Info: Chiesa di Berceto
tel. +39 0525 60087

39 PARISH CHURCH OF SAN PIETRO Costa - Tizzano Val Parma

French influence can be clearly seen in this church's architecture; in fact, the 'clocherporche', or bell tower on the façade, is typically French.

Info: Chiesa di Tizzano
tel. +39 0521 868520

40 CHURCH OF SANTA GIULIANA Moragnano - Tizzano Val Parma

Built with local yellow stone, it features two elegant portals surmounted by lunettes depicting crosses and other symbols. Numerous inscriptions and engravings may be admired on the outer apse.

Info: Chiesa di Tizzano
tel. +39 0521 868520

41 CHURCH OF SANTAMARIA ASSUNTA Zibana - Palanzano

A simply-designed church on the path connecting the valley of the province of Parma to the Lunigiana valley, built

with a particular bluish local stone. Info: Chiesa di Palanzano
tel. +39 0521 897228

42 PARISH CHURCH OF SANTA MARIA ASSUNTA Sasso - Neviano degli Arduini

This church stands isolated on a rocky outcrop and dominates the valley below; inside, the floor is tilted and the simple columns create an austere beautiful atmosphere. Info: Chiesa di Sasso
tel. +39 0521 846104

43 PARISH CHURCH OF SANT'AMBROGIO

Bazzano - Neviano degli Arduini

Of particular interest is the precious octagonal christening font, dating back to the 10th – 11th centuries, richly decorated and depicting finely sculpted figures.

Info: Chiesa di Neviano degli Arduini
tel. +39 0521 843364

44 CHURCH OF SANTA CROCE Parma

Built in the early 13th century, at the entrance of the Via Francigena into the city, it still houses precious Romanesque capitals with figures, and a relic of the True Cross. Info: Chiesa di Santa Croce
tel. +39 0521 237610



45

45 VERDI SITES

Busseto and its surroundings are the keys that all the music lovers must open in order to know more about Giuseppe Verdi, the towering musical genius of his time. Travel from Roncole to Casa Barezzi, to the Theatre and Piazza Verdi, through the porches of the town to Villa S. Agata and breathe the same atmosphere, the same sounds and smells and colours which dominate the Po valley and which were such a source of inspiration to the Maestro.

Info: lat Busseto
tel. +39 0524 92487
www.bussetolive.com

● BIRTHPLACE

In this simple building, also used as a stable by the travelers, situated at a crossroads at the heart of the village, his father ran a tavern and a grocery



46

store; his mother was a spinner. He did not forget their origins, he wrote in 1863 "I was, I am and I will always be a peasant from Le Roncole". In 1913, the centenary of the birth, a bronze bust created by the sculptor Giuseppe Cantù was placed in the garden in front of the house.
Via della Processione 1,
Roncole Verdi tel. +39 0524 97450

● TEATRO VERDI VERDI THEATRE

The theatre is located inside the Rocca (Pallavicino's Castle), a 13th century building widely rehashed; today it has the same aspect that was given in the second half of the 19th century. The Municipality bought the fortress, in 1856. The building of the theatre took place in the years between 1856 and 1868, despite the opinion of the Master.

He was in contrast with the Busseto people for their intrusiveness in his private sphere and because he believed the theatre was too expensive, an unnecessary expense for the future.

Piazza G. Verdi 10, Busseto
tel. +39 0524 92487

● BAREZZI'S HOUSE

Antonio Barezzi, wealthy trader and music lover, early realized on the attitude of Giuseppe Verdi to the music and invited him into his home as a teacher for his daughter Margherita.

On the façade of the house there is a marble and bronze plaque in memory of Antonio Barezzi with words dictated by Arrigo Boito in 1913.

via Roma 119, Busseto
tel. +39 0524 931117



47

● VILLA VERDI

Three kilometers far from Busseto, just beyond the river Ongina, there is Villa Verdi. This is the house where Verdi lived the age of maturity. A wide romantic park surrounds the Villa. This garden is also full of exotic trees. In the house still live the heirs Carrara-Verdi but it's possible to visit some rooms with originals furniture in "Luigi Filippo" style and the oldest furnishings purchased by Verdi.

Via G. Verdi 22, Villanova sull'Arda PC
tel. +39 0523 830000

● RENATA TEBALDI MUSEUM

In June 2014 the "Renata Tebaldi" Museum was inaugurated, inside the old stables of Villa Pallavicino. In the Museum there are objects, clothes, jewels that belonged to the lady that Arturo Toscanini has called "Voice of an Angel" and also



documents, pictures, testimonials of famous artists and work colleagues of Tebaldi. The Museum has not only the purpose to show the rich material from the archives of the famous artist, but also to become a full-fledged musical attraction. Depending on the importance of such events, is expected to open the courtyard of the stables of Villa Pallavicino at summer shows, almost creating a real open-air theatre. Via Ferdinando Provesi 41, Busseto tel. +39 0524 97870

● GIUSEPPE VERDI NATIONAL MUSEUM

The beautiful Villa Pallavicino is located near the building of Santa Maria degli Angeli and is surrounded by a water moat. In front of the museum you see a 17th entrance hall divided into three parts created by the architect Domenico Valmagini.

Villa Pallavicino is also called formerly "Boffalora" and popularly "Palazzo dei Marchesi". The 27 operas by the "Cigno di Busseto" are represented along an historic route with reproductions of Casa Ricordi's original scenes and reconstructions of 19th century environments with Hayez's paintings. Costumes of Verdi heroines, Verdi's living room, the music room and the Messa da Requiem room in honor of Rossini and Manzoni complete the path. Via Ferdinando Provesi 35, Busseto Tel. +39 0524 931002

46 GUARESCHI SITES

Giovannino Guareschi, a true product of the "Bassa", lovingly narrated his "Small World" through his characters and the places he saw and visited throughout his life. If you want to get under the skin of this extraordinary author, there are three fundamental places to visit, all of which are on the cycling routes that wind their way through the villages and along the Po river embankments: Fontanelle, his birthplace, with a new museum dedicated to the author; Roncole Verdi, where he lived and where his children have mounted a permanent exhibition and a study centre; and the "Centro del Boscaccio" in Diolo which houses numerous mementoes and relics.

Strada Villa 18, Fontanelle
www.giovanninoguareschi.com

● MUSEUM "IL MONDO PICCOLO" FONTANELLE DI ROCCABIANCA

The "Mondo piccolo" Museum was opened into the old school of Fontanelle, near the birthplace of Guareschi; an exhibition that blends modern technology with ancient objects, to evoke the magic of the "Bassa Parmense".

Via della Processione
Roncole Verdi
Info: tel. +39 0521 876165 / 876138

● EXHIBITION AND STUDY CENTRE RONCOLE VERDI DI BUSSETO

The Study Centre of Roncole Verdi is

managed by his sons Carlotta and Alberto, it is an international reference point for those who want to get to know Guareschi, the character and his work. The museum is equipped with a well-stocked store.

Strada Circonvallazione Chiesa Diolo
tel. +39 0524 92495

● CENTRO DEL BOSCACCIO DI LOLO DI SORAGNA

"Centro del Boscaccio" of Diolo, organized by a real Guareschi impressionist, Mr. Cesare Bottazzi. Bottazzi has collected testimonials, photos and documents in the surviving bell tower of the Church of Diolo.

Info: lat Fontanello
tel. +39 0521 823220

47 BERTOLUCCI SITES

Attilio Bertolucci, contemporary poet and writer, often drew inspiration for his work from the Val Bratica and Casarola, places linked to his childhood and a beloved refuge in his adulthood. Nature and landscape in this area of the Apennines - a true literary park - can be enjoyed by following the "Culture Trail", designed as a homage to the author and his heartland: read quotations from his work as you visit the places he cherished and wrote about.

Info: Parco dei Cento Laghi,
Monchio delle Corti
tel. +39 0521 896618 / 880363
www.parchi.parma.it

museums of the province

48 ETTORE GUATELLI MUSEUM Ozzano Taro - Collecchio

A forest of objects, traditions and emotions from daily life artistically arranged in a rustic country house.
tel. +39 0521 333601

49 MAGNANI-ROCCA FOUNDATION Mamiano - Traversetolo

From Goya to Durer, from Cezanne to Morandi: a prestigious art collection in a villa set in the green countryside.
tel. +39 0521 848327 / 848148

50 F. LEVI JEWISH MUSEUM Soragna

Local Jewish history, culture and traditions, significant mementoes and objects.
tel. +39 0524 599399

51 G. RICCARDI ETHNOGRAPHIC MUSEUM Zibello

Agricultural culture in the Po valley and the moods of the Po river, exhibited in former Dominican cloisters.
Comune di Zibello tel. +39 0524 939711

52 MUSEUM OF THE RESISTANCE MOVEMENT

Sasso - Neviano degli Arduini
Photos, films and relics narrate the Partisan Resistance in WW 2 in the province of Parma.
Comune di Neviano tel. +39 0521 843110

53 MUSEUM OF MAN AND HIS ENVIRONMENT Bazzano - Neviano degli Arduini

Labour and working environments,





the processes for the production of hemp, bread, wine; the games that used to be played in the past.

Comune di Neviano
tel. +39 0521843110 / +39 333 4504976

54 MUSEUM OF LOCKS

Cedogno - Neviano degli Arduini

Labour and working environments, the processes for the production of hemp, bread, wine; the games that used to be played in the past.

Comune di Neviano
tel. +39 0521 843110 / 846722

55 RENATO BROZZI MUSEUM **Traversetolo**

Sculptures, sketches, letters, drawings and mementoes of the artist from Parma and close friend of the poet Gabriele D'Annunzio.
tel. +39 0521 842436

56 MUSEUM CENTRE - Bedonia

The former bishop's seminary houses

a museum of natural history, a picture gallery, a planetarium and cultural events.
tel. +39 0525 824420 / 824621

57 PALACE OF THE URSULINE NUNS IN FIDENZA **Fidenza**

The new Culture Palace in Fidenza with exhibits ranging from fossils to the "Risorgimento", Italy's movement to gain independence, it houses the new picture gallery dedicated to the local painter Emanuelli.

tel. +39 0524 517390

58 PALEONTOLOGICAL MUSEUM - THE ANCIENT SEA **Salsomaggiore Terme**

Remains of shells, fish, whales, to narrate the presence of the sea where we now have fields and hills.

tel. +39 0524 580270

59 MUSEUM OF EMIGRANTS **Tarsogno - Tornolo**

The story of emigrants leaving the Taro Valley for other countries in

Europe or the USA. Photos, objects and mementoes of the protagonists.
tel. +39 0525 89272

60 MARTINO JASONI MUSEUM **Corchia - Berceto**

An inspiring museum dedicated to the artist Martino Jasoni, "a life spent between New York and Corchia in the Apennines".
casacorchia@comune.berceto.pr.it

61 ELENA SAMPERI MUSEUM **Ex Colonia Montana Corniglio**

A permanent exhibition of this young artist, tragically disappeared at the age of 36, has been prepared in some rooms at the first floor of the "Ex Colonia Montana".
tel. +39 0521 880363

62 MUSEUM OF THE LANDSCAPE **Ex Aranciaia Colorno**

MUPAC is a ethnographic museum that shows the civilization and culture of men between earth and river and the

Po river has deeply signed the lifestyle of this part of parmesan territory.
tel. +39 0521 313790

63 CIVIC COLLECTION OF CONTEMPORARY ART **Loc. Sella di Lodrignano Neviano degli Arduini**

A little and very interesting exhibition of works made by some masters of contemporary art: Maccari, Nattini, Colibrì e many more. Rooms available for temporary exhibitions.

Comune di Neviano
tel. +39 0521843110 / +39 329 6170951

64 LABIRINTO E MUSEO FRANCO MARIA RICCI

Loc. Masone Fontanellato

The dream by Franco Maria Ricci turned into a real marvel: discover its art collection and visit the labyrinth of 7 hectares, all to go.
tel. +39 0521 827081



65

The province of Parma: heart of the Food Valley and the richest with typical products protected by quality name brands. To some of these products, true masterpieces of taste, the province has dedicated a circuit of museums scattered throughout the territory - places that maintain the memory of the traditions and knowledge and at the same time provide a gastronomic and sensory dining experience. Entry fee.

For information and reservation
tel. +39 0521 821139

65 THE PARMIGIANO REGGIANO MUSEUM - SORAGNA

The history and evolution of a “form” of the king of cheeses, with equipment, photos and movies, from the Middle Ages to the present day, set in a real nineteenth century cheese factory.

Info: Corte Castellazzi Soragna
prenotazioni.parmigiano@museidelcibo.it

66 THE HAM MUSEUM - LANGHIRANO

A fascinating journey through the processing of meats from Parma: from the salt, to the pig, the ancient yet unchanging techniques, traced through the tools of the trade of the butchers.

Info: Ex Foro Boario
Via Bocchialini 7 Langhirano
prenotazioni.prosciutto@museidelcibo.it



68

67 THE FELINO SALAMI MUSEUM - FELINO

In the cellars of the castle the prince of salami tells his story, from ancient documents, butchery tools, rare photos, curious characters and high delicatessen.

Info: Castello di Felino
Strada al Castello 1 Felino
prenotazioni.salame@museidelcibo.it

68 THE PASTA MUSEUM - COLLECCHIO

The “Queen of the dining halls” tells her story: from the grain of wheat to the mill, from the domestic tools to a complete nineteenth century pasta factory, all the way to our kitchen tables.

Info: Corte di Giarola
Strada Giarola 11 Collecchio
prenotazioni.pasta@museidelcibo.it

69 THE TOMATO MUSEUM - COLLECCHIO

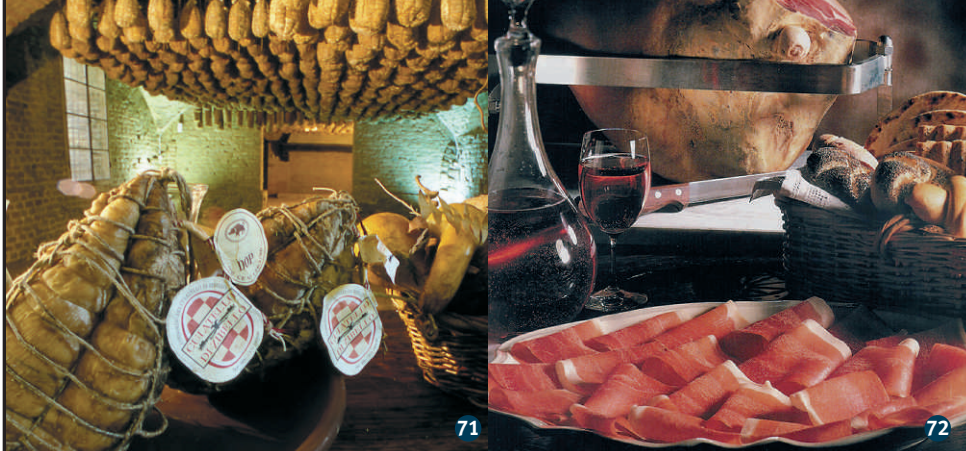
In the setting of the fascinating Court of Giarola the “red gold” brought from the Americas presents ancient technologies, images, documents and knowledge linked to its adopted country: Parma.

Info: Corte di Giarola
Strada Giarola 11 Collecchio
prenotazioni.pomodoro@museidelcibo.it

70 THE WINE MUSEUM - SALA BAGANZA

The history of wine from the hills of Parma in the cellars of the Sanvitale Castle: archeology, tools, barrels, bottles, corkscrews and an “immersion” into the Farnesi icebox all make for an engaging visit.

Info: Rocca Sanvitale
Piazza Gramsci Sala Baganza
prenotazioni.vino@museidelcibo.it



71 THE CULATELLO OF ZIBELLO TRAIL

This itinerary follows the Via Emilia and the Po river, in a territory where fog is a fundamental feature of the winter landscape and plays a decisive role by providing the right dampness in the cellars, creating the extraordinary triumph of taste which identifies Culatello di Zibello DOP. Surrounded by castles and Verdi's music, the noble Culatello is the emperor of charcuterie and is at its best with Parmigiano Reggiano cheese and a glass of Fortana del Taro wine. Numerous food-and-wine events are held along the trail.

Info: www.stradadelculatello.it

72 THE PARMA HAM AND HILL WINES TRAIL

In the first foot-hills one encounters to the south-east of Parma, the crisp

air and a slow seasoning process create the "sweet" Prosciutto di Parma, (Parma ham), which should be served with local wines, guaranteed to delight the palate of the most demanding gourmet. Salame di Felino, Parmigiano Reggiano cheese and the Black Truffles of Fragno are also produced in this area, to complete the palette of gastronomic marvels. Castles, churches and other artistic and natural beauties dot this territory and create a wonderfully enjoyable backdrop.

Info: tel. +39 0521 630082
www.stradadelprosciutto.it

73 THE PORCINI MUSHROOMS OF BORGOTARO TRAIL

The splendid natural scenery of the upper Taro valley provides the setting for this itinerary celebrating one of the most significant typical

products of the province of Parma: the Porcini mushroom of Borgotaro, the only mushroom which can boast a Protected Geographical Indication, an "ingredient" that adds prestige to the culinary tradition of the area, which includes Parmigiano Reggiano cheese, and potatoes and green herbs and products made with chestnuts. All these things can best be savoured during two events in September: the Porcini Mushroom Fair in Albareto, and the Porcini Mushroom Festival in Borgo Val di Taro.

Info: tel. +39 0525 921812
www.stradelfungo.it

74 THE MUSEUM OF OLIVE OIL

The Museo Agorà Orsi Coppini, Cultural Center of Oil and Olive tree, is an emotional journey where the Extra Virgin olive Oil becomes logos, picture, handicraft, culture that

you can enjoy, which translates into a direct experience of knowledge. The Museum of Olive Oil, a former dairy of XIX century specialized in the processing of Parmigiano-Reggiano, it became the set of a recovered culture, which has been brought back to this land after about a thousand years: olive growing.

Info: via Bruno Ferrari 3,
San Secondo P.se
tel. +39 0521 877601
museo@coppini.it
www.coppini.it

75 THE CULATELLO MUSEUM

By an idea of the brothers Massimo and Luciano Spigaroli, the itineraries and the history of the Culatello take shape at the Antica Corte Pallavicina in Polesine Parmense (PR).

Reality in movement narrated by audio guides in two languages, to venture into the traditional places, from the Cantina dei Culatelli (the Culatelli Cellar) to the Sala delle Botti (the Barrel Room) to the Museum "Verdi Agricoltore" and the Po river banks.

Info: Tel. +39 0524.936539
relais@acpallavicina.com
www.acpallavicina.com





76

76 SALSOMAGGIORE SPA

Salsomaggiore is one of the most well established spas in Italy, famous for its salsobromiodic water. Traditional spa treatments are available at the Terme Zoja, built at the end of the Seventies. In Salsomaggiore, the Terme Berzieri, an architectural jewel and temple of Art Déco, sumptuous and richly decorated by Galileo Chini, also provides beauty and wellness treatments.

Info: Terme Berzieri Piazza Berzieri
Terme Zoja Parco Mazzini
Salsomaggiore Terme
tel. +39 0524 582611
n° verde 800 861385
www.termedisalsomaggiore.it



77

77 TABIANO SPA

A modern centre where the most advanced and stimulating facilities for wellness are available as well as beauty treatments of all kinds. The new area T-Spatium Aquae offers fascinating sensorial programs combining the health properties of the water with various perfumed essences. Saunas, bio-saunas, Turkish baths, kneipp therapies, Jacuzzis and more, all offer a panacea for the body and the mind.

Info: Viale alle Terme Tabiano Terme
Terme Respighi tel. +39 0524 564111
T-Spatium tel. +39 0524 564130
www.termeditabiano.it



78

78 MONTICELLI SPA

The Parco delle Terme houses one of the most advanced spa centres in the whole of Italy. Besides the traditional inhalation treatments, the spa also offers customized treatments in seven specialized centres: three spa hotels, gym halls, several spa pools, a solarium and lots of relaxing in the quiet of the park, to tone and invigorate the body and mind. However, it is the water that is pre-eminent, rich in mineral salts and bromide..

Info: Via Montepelato Nord 4
Monticelli
tel. +39 0521 682711
n° verde 800 237759
www.termedimonticelli.it

79 SANT'ANDREA BAGNI SPA

The success of this spa resort derives from the qualities of its waters, which gush into this small valley upstream from the present day Parco della Mescita. The Spa in Sant'Andrea Bagni offers mineral water for drinking (purgative, sulphurmagnesium, alkaline water with low sulphur content and ferruginous-potassium water) and water for bathing, for inhalations and irrigations (salso bromiodic and sulphurcalcic). Eight different types of water spring from the heart of the rock after a long underground journey.

Info: Piazza Ponci 1
Sant'Andrea Bagni
tel. +39 0521 431233 / 430358





80



81



85

For those who love active holidays and practising outdoor sports, the province of Parma offers numerous possibilities, from the Po river to the Apennine mountains, along the cycle routes in the Bassa - the low-lying plain - as well as the Great Riding Route for those who love horse-riding, the routes of the Grand Tour in the Apennines to the east of Parma for those who love mountain-biking, the trekking routes along mountain ridges, the Pilgrim's Way - Via Francigena - and the Route of the Stone-cutters, all provide an opportunity for those who love to hike; the skiing resorts in Schia and Pratospilla delight lovers of winter sports and snow-racket excursions with snow-rackets are also available.

Those who love extreme sports can enjoy hanggliding and paragliding on Monte Caio, as well as downhill

events and flights over the Parco 100 Avventure at Prato Spilla.

80 NATIONAL PARK IN THE TUSCAN-EMILIAN APENNINES

High mountain ridges and beech forests, the ideal habitat for wolves and golden eagles. A must for lovers of unspoilt nature.

Info: tel. +39 0585 947200
www.parcoappennino.it

81 CENTO LAGHI REGIONAL PARK

Ideal for excursions to lakes formed during the Ice Age, through endless woods and meadows, in an environment not unlike the Alps.

Info: Monchio delle Corti / Corniglio
tel. +39 0521 896618 / 880363
www.parchidelducato.it

82 BOSCHI DI CARREGA

REGIONAL PARK

An ancient hunting ground for the Farnese and Borbone families, with woods and lakes, this was the first Regional Park set up by the Emilia-Romagna Regional Authorities.

Info: Centro Parco Casinetto, Sala Baganza
tel. +39 0521 836026
www.parchidelducato.it

83 TARO RIVER REGIONAL PARK

A stopping point for migratory birds, attracted by the natural corridor created by the river, of great interest to birdwatchers.

Info: Corte di Giarola, Collecchio
tel. +39 0521 802688
www.parchidelducato.it

84 STIRONE RIVER REGIONAL PARK

The canyon excavated by the stream

has brought to light fossils and relics from pre-history, when the ocean covered what is today the Po river valley.

Info: Salsomaggiore Terme
tel. +39 0524 581139
www.parchidelducato.it

85 MONTE FUSO PROVINCIAL PARK

Trekking routes among oaks, chestnut trees and beeches, suitable for family outings. There are itineraries for mountain-biking or horse-riding, surrounded by deer.

Info: UIT Monte Fuso loc. Capetta, Scurano
tel. +39 0521 840151
Parchi del Ducato tel. +39 0521 802688

86 MONTE PRINZERA NATURAL RESERVE

An ophiolithic relief between the Taro and Baganza valleys, presenting





83



90



91

extraordinary biodiversity and geodiversity, and wild nature.

Info: Fornovo Taro
tel +39 0521 802688
www.parchidelducato.it

87 PARMA MORTA NATURAL RESERVE

An ancient section of the Parma river has become an area full of reeds and marshland flora, the ideal habitat for a rich fauna.

Info: Strada della Resistenza 2, Mezzani
tel. +39 0521 802688
www.parchidelducato.it

88 LIPU NATURAL RESERVE IN TORRILE

The marshy environment has been re-created, turning this area into a birdwatcher's paradise. Electric scooters are available free of charge for tourists with special needs.

Info: Oasi di Torrile
tel. +39 0521 802688
www.parchidelducato.it

89 GHIRARDI NATURAL RESERVE

A comprehensive view of the flora and fauna of the Apennines in just 600 hectares. Suitable for research projects.

Info: Borgo Val di Taro
tel. +39 0521 802688
www.parchidelducato.it

90 THE GREAT RIVER

For those who would like to spend the day listening to the "voice" of the Po, going with the flow, through poplar woods and the spellbinding mist, whose every whisp defines the mood of this enchanting river.

River moorings at Polesine Parmense, Torricella di Sissa, Stagno di Roccabianca and Sacca di Colorno.

Bicycles are allowed aboard the

motorship Rigoletto.

A fun way to get to know the beauty of the Bassa Parmense - the low-lying plain - is along the bike paths. The Verdi itinerary, BiciParmaPo, Ciclotaro, the Mondo Piccolo Route and the Route of the Three castles, take tourists on bikes to the main places of interest.

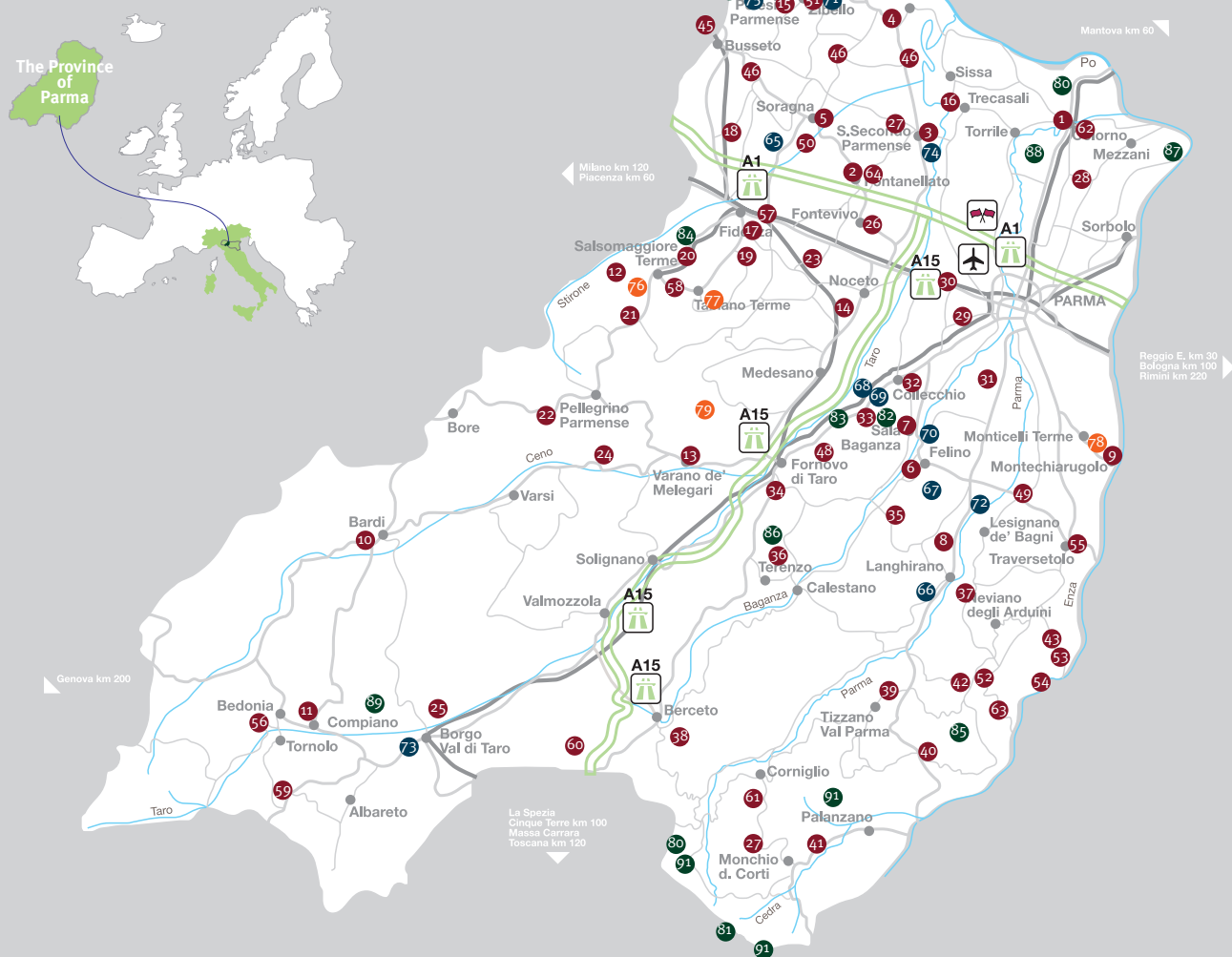
Info: Parma Point
tel. +39 0521 931800
info@parmapoint.it

91 APENNINES & SNOW

Eastern Parmesan Apennines offer, to whom that love winter sports, many possibilities: two ski resorts offer the necessary structure for skiing; in Schia (Tizzano val Parma) and Prato Spilla (Monchio delle Corti) you can find chairlifts and snowboard traks; the highest crest is the best place where to practice alpine skiing; the Lagdei-

Lagoni-Lago Santo area (Corniglio) is indicated for Nordic skiing and hiking with snowshoes.

map of the Province



- 1** THE COLORNO PALACE pag. 6
- 2** ROCCA SANVITALE IN FONTANELATO pag. 6
- 3** ROCCA DEI ROSSI IN SAN SECONDO pag. 6
- 4** ROCCABIANCA CASTLE pag. 6
- 5** ROCCA MELI LUPI IN SORAGNA pag. 6
- 6** FELINO CASTLE pag. 6
- 7** SALA BAGANZA CASTLE pag. 6
- 8** TORRECHIARA CASTLE pag. 6
- 9** MONTECHIARUGOLO CASTLE pag. 6
- 10** BARDI FORTRESS pag. 6
- 11** COMPIANO CASTLE pag. 6
- 12** SCIPIONE CASTLE DEI MARCHESI PALLAVICINO pag. 7
- 13** CASTELLO PALLAVICINO DI VARANO DE' MELEGARI pag. 7
- 14** CASTLE OF NOCETO pag. 7
- 15** ANTICA CORTE PALLAVICINA pag. 7
- 16** ROCCA DEI TERZI DI SISSA pag. 7
- 17** SAN DONNINO CATHEDRAL pag. 7
- 18** SANTA MARIA ABBEY pag. 7
- 19** CHURCH OF ST THOMAS BECKET pag. 7
- 20** CHURCH OF S. NICOMEDE pag. 7
- 21** PARISH CHURCH OF S. GIOVANNI BATTISTA pag. 8
- 22** SANCTUARY OF S. MARIA ASSUNTA pag. 8
- 23** CHURCH OF SS. SIMONE E GIUDA pag. 8
- 24** CHURCH OF SAN LORENZO AND BAPTISTERY pag. 8
- 25** CHURCH OF S. CRISTOFORO pag. 8

- 26** ABBEY OF S. BERNARDO pag. 8
- 27** PARISH CHURCH OF S. GENESIO pag. 8
- 28** PARISH CHURCH OF S. GIOVANNI BATTISTA pag. 8
- 29** CHURCH OF S. GEMINIANO pag. 8
- 30** PARISH CHURCH OF S. PANCRAZIO pag. 9
- 31** PARISH CHURCH OF SS. IPPOLITO E CASSIANO pag. 9
- 32** PARISH CHURCH OF S. PROSPERO pag. 9
- 33** CHURCH OF S. BIAGIO pag. 9
- 34** PARISH CHURCH OF SANTA MARIA ASSUNTA pag. 9
- 35** CHURCH OF S. ILARIO pag. 9
- 36** PARISH CHURCH OF SANTA MARIA pag. 9
- 37** CHURCH OF SS. PIETRO E PAOLO AND ABBEY OF S. BASILIDE pag. 9
- 38** S. MODERANNO CATHEDRAL pag. 9
- 39** PARISH CHURCH OF S. PIETRO pag. 9
- 40** CHURCH OF SANTA GIULIANA pag. 9
- 41** CHURCH OF SANTA MARIA ASSUNTA pag. 9
- 42** PARISH CHURCH OF SANTA MARIA ASSUNTA pag. 9
- 43** PARISH CHURCH OF S. AMBROGIO pag. 9
- 44** CHURCH OF SANTA CROCE pag. 9
- 45** VERDI SITES pag. 10
- 46** GUARESCHI SITES pag. 11
- 47** BERTOLUCCI SITES pag. 11
- 48** ETTORRE GUATELLI MUSEUM pag. 11

- 49** MAGNANI ROCCA FOUNDATION pag. 11
- 50** F. LEVI JEWISH MUSEUM pag. 11
- 51** G. RICCARDI ETHNOGRAPHIC MUSEUM pag. 11
- 52** MUSEUM OF THE RESISTANCE MOVEMENT pag. 11
- 53** MUSEUM OF MAN & HIS ENVIRONMENT pag. 11
- 54** MUSEUM OF LOCKS pag. 12
- 55** RENATO BROZZI MUSEUM pag. 12
- 56** MUSEUM CENTRE IN BEDONIA pag. 12
- 57** PALACE OF THE URSULINE NUNS IN FIDENZA pag. 12
- 58** MUSEUM OF THE ANCIENT SEA pag. 12
- 59** MUSEUM OF EMIGRANTS pag. 12
- 60** MARTINO JASONI MUSEUM pag. 12
- 61** ELENA SAMPERI MUSEUM pag. 12
- 62** MUSEUM OF THE LANDSCAPE pag. 12
- 63** CIVIC COLLECTION OF CONTEMPORARY ART pag. 12
- 64** LABIRINTO E MUSEO FRANCO MARIA RICCI pag. 12
- 65** THE PARMIGIANO REGGIANO MUSEUM IN SORAGNA pag. 13
- 66** THE HAM MUSEUM IN LANGHIRANO pag. 13
- 67** THE FELINO SALAMI MUSEUM IN FELINO pag. 13
- 68** THE PASTA MUSEUM - COLLECCHIO pag. 13
- 69** THE TOMATO MUSEUM - COLLECCHIO pag. 13
- 70** THE WINE MUSEUM - SALA BAGANZA pag. 13

- 71** THE CULATELLO OF ZIBELLO TRAIL pag. 14
- 72** THE PARMA HAM AND HILL WINES TRAIL pag. 14
- 73** THE PORCINI MUSHROOMS OF BORGOTARO TRAIL pag. 14
- 74** THE MUSEUM OF OLIVE OIL pag. 14
- 75** THE CULATELLO MUSEUM pag. 14
- 76** SALSOMAGGIORE SPA pag. 15
- 77** TABIANO SPA pag. 15
- 78** MONTICELLI SPA pag. 15
- 79** SANT'ANDREA BAGNI SPA pag. 15
- 80** NATIONAL PARK IN THE TUSCAN-EMILIAN APENNINES pag. 16
- 81** CENTO LAGHI REGIONAL PARK pag. 16
- 82** BOSCHI DI CARREGA REGIONAL PARK pag. 16
- 83** TARO RIVER REGIONAL PARK pag. 16
- 84** STIRONE RIVER REGIONAL PARK pag. 16
- 85** MONTE FUSO PROVINCIAL PARK pag. 16
- 86** MONTE PRINZERA NATURAL RESERVE pag. 16
- 87** PARMA MORTA NATURAL RESERVE pag. 17
- 88** LIPU NATURAL RESERVE IN TORRILE pag. 17
- 89** GHIRARDI NATURAL RESERVE pag. 17
- 90** THE GREAT RIVER pag. 17
- 91** APENNINES & SNOW pag. 17

USEFUL INFORMATION



AIRPORTS

Parma G. Verdi +39 0521 951511
Milano Linate, 130 km from Parma
Milano Malpensa, 180 km from Parma
Bologna G. Marconi, 100 km from Parma



MOTORWAYS

A1 Milano-Bologna-Roma-Napoli,
exits: Fidenza and Parma A15
Parma-La Spezia,
exits: Parma Ovest, Fornovo,
Borgotaro and Berceto



RAILWAYS

info: 892021



DIRECTIONS

Distances in km from
Parma to main cities



FAIRS

Fiere di Parma
+39 0521 9961



COACHES

TEP: Buses and Coaches
+39 0521 2141 / 840222222



- 1 CATHEDRAL**
pag. 2
- 2 DIOCESAN MUSEUM**
pag. 2
- 3 BAPTISTERY**
pag. 2
- 4 PILOTTA PALACE**
pag. 2
- 5 CHAMBER OF ST. PAUL**
pag. 2
- 6 STUARD GALLERY**
pag. 3
- 7 PUPPET'S MUSEUM**
pag. 3
- 8 GLAUCO LOMBARDI MUSEUM**
pag. 3
- 9 AMEDEO BOCCHI MUSEUM**
pag. 3
- 10 CHURCH AND CLOISTERS OF ST. GIOVANNI EVANGELISTA**
pag. 3
- 11 OLD PHARMACY**
pag. 3
- 12 CHURCH OF SANTA MARIA DELLA STECCATA**
pag. 3
- 13 CONSTANTINIAN MUSEUM**
pag. 3
- 14 REGIO THEATRE**
pag. 4
- 15 NICOLÒ PAGANINI CONCERT HALL**
pag. 4
- 16 TOSCANINI'S BIRTH PLACE**
pag. 4
- 17 HOUSE OF MUSIC**
pag. 4
- 18 HOUSE OF SOUND**
pag. 4
- 19 DUCAL PARK AND PALACE**
pag. 4
- 20 PALAZZETTO EUCHERIO SANVITALE**
pag. 4
- 21 CITTADELLA PARK**
pag. 5
- 22 CARLO MATTIOLI MUSEUM**
pag. 5
- 23 BOSSI BOCCHI PALACE**
pag. 5
- 24 CHINESE ART AND ETNOGRAPHIC MUSEUM**
pag. 5
- 25 CSAC**
pag. 5
- 26 NATURAL HISTORY MUSEUM**
pag. 5
- 27 BOTANIC GARDEN**
pag. 5
- 28 MUSEUM OF PHYSICS AND EARTH SCIENCES**
pag. 5
- 29 MUSEUM OF THE DEPARTMENT OF MATHEMATICS AND INFORMATION TECHNOLOGY**
pag. 5
- 30 MUSEUM OF BIOMEDICAL, BIOTECHNOLOGICAL AND TRANSLATIONAL SCIENCES - S.Bi.Bi.T**
pag. 5
- 31 LEMOIGNE VETERINARY ANATOMICAL MUSEUM**
pag. 5
-  **PARMA POINT**
-  **IAT PARMA**

Summary

Introduction	pag. 1
The City	pag. 2-3-4-5
Castles	pag. 6-7
Via Francigena and Romanesque Pathways	pag. 7-8-9
People and Places	pag. 10-11
Museums of the province	pag. 11-12
Food Museums	pag. 13
Taste	pag. 14
Wellness	pag. 15
Sport and Nature	pag. 16-17
Map of the Province	pag. 18-19
Map of the City	pag. 20-21

The editorial staff do not accept responsibility for changes of address, sites.

Progetto a cura di: Parma Turismo
 Progetto grafico: The Ad Store Italia
 Photos provided by Archivio Castelli del Ducato, Archivio Servizio Turismo della Provincia di Parma (ph by Massimo Dall'Argine, Mauro Davoli, Alberto Mauri, Michele Mendi), Archivio Valtaro. it, Archivio Comune di Parma, Parma Turismo, Comunità Montana Appennino Parma Est, Meridiana Immagini and Mario Rebeschini, Labirinto FMR (ph by Carlo Vannini). Photos of the National Gallery, Farnese Theatre and Camera di San Paolo published on authorization of the Ministry for Cultural Heritage and Activities.



BIKE RENTAL



WC



**PROVINCIA
DI PARMA**

